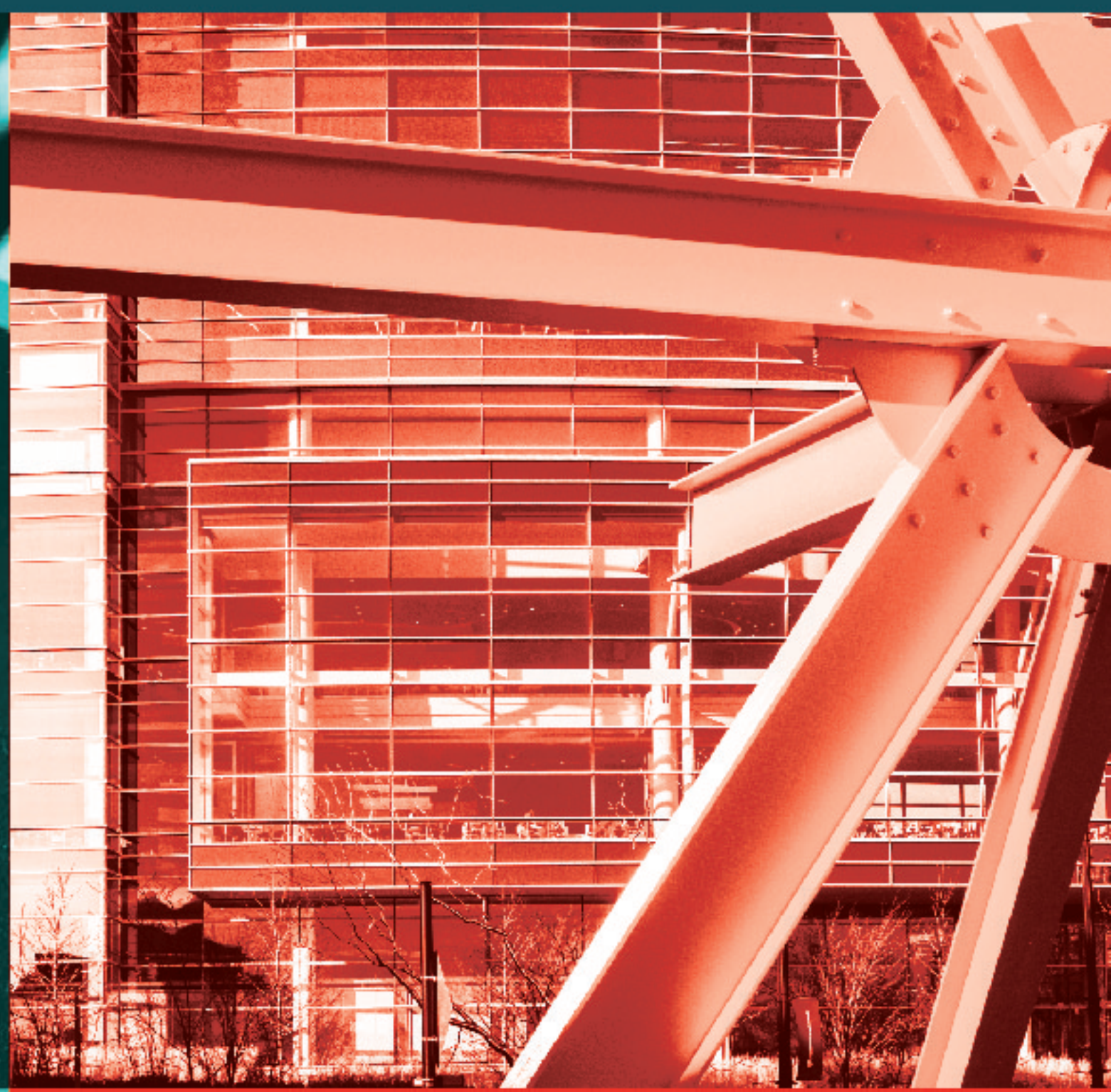




Live Like a Milwaukee Local

MKE Visitation Guide | 2021

MPI



WHAT | WHERE | WHEN?

► Stay

7SEVENTY7 Guest Suite | Dubbel Dutch | Drury Plaza Hotel
The Pfister Hotel | Saint Kate Hotel | Milwaukee Athletic Club | Aloft Hotel

► Eat

Sobelman's Pub and Grill | Mader's | Lakefront Brewery | Milwaukee Brat House
Bacchus | Toast | Celesta | Colectivo Coffee | Milwaukee Public Market

► Drink

Drink Wisconsibly Pub | Wolski's Tavern | The Outsider | Shanghai
Camp Bar | Milwaukee Brewing Company | Balzac Wine Bar

► Park

The HOP | Bublr Bike | Public Transit

► Play

Bradford Beach | Milwaukee Art Museum | Historic Third Ward | AXE MKE
Harley Davidson Museum | Milwaukee Kayak Company | Grant Park | Milwaukee RiverWalk
Pabst Mansion | SafeHouse | Discovery World Science + Technology Center | Fiserv Forum
American Family Field | Discover Iconic Milwaukee Tour | Summerfest



Luxury Hotel Apartment

7SEVENTY7 Guest Suite

<https://www.live7seventy7.com>



“Gracious apartment homes in a setting that feels like a high-end hotel.”

The one-bedroom guest suite features everything you will need for a comfortable stay: kitchen, washer / dryer, bathroom, bedroom, and walk-in closet. There will be a two-night minimum at \$185.00 a night.

Here is a video tour of the guest suite located on the 10th floor:

<https://api.realtync.com/s/qtnacyNo7>

Address:

777 N. Van Buren St.
Milwaukee, WI 53202

Whimsical and Traditional

Dubbel Dutch

<https://www.thedubbeldutch.com>



Built in 1898 and restored in 2020, this East Town building is sure to leave you with a lasting impression. Dubbel Dutch has a rich history that makes each guestroom and all common areas playful and refined with modern furniture positioned against 19th century architectural details and finishes. Discounted room rates are available.

Address:

817-819 N. Marshall St.
Milwaukee, WI 53202

Location, Location, Location

Drury Plaza Hotel

<https://www.druryhotels.com>



Located in the heart of downtown, Drury Plaza Hotel is a historic renovation of the 15-story First Financial Centre building. Each room includes amenities, such as free Wi-Fi, TV, microwave, refrigerator, iron/ironing board, and hairdryer. Discounted room rates are available.

Address:

700 N. Water St.
Milwaukee, WI 53202



A MKE Icon

The Pfister Hotel

<https://www.thepfisterhotel.com>

As one of Milwaukee and the Midwest's best hotels, The Pfister is located near the Historic Third Ward and continues to celebrate a tradition of gracious service and impeccable style.

The nightly guest room rate is \$156.00.

Address:

424 E. Wisconsin Ave.
Milwaukee, WI 53202



Boutique Arts Experience

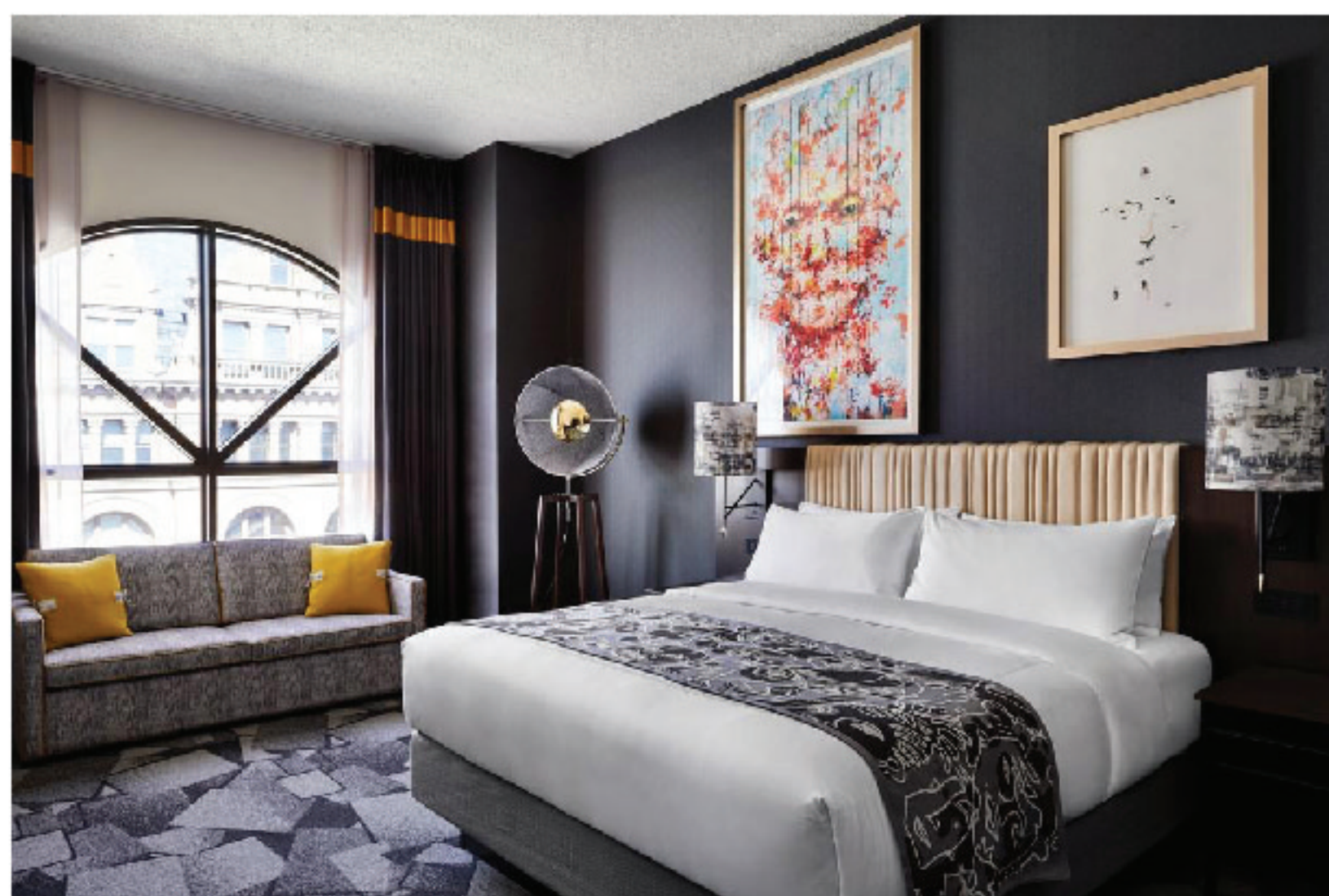
Saint Kate Hotel

<https://www.saintkatearts.com>

Created by artists for artists. Located between the Milwaukee Riverfront and the center of downtown, Saint Kate has a lot to offer, from the professional business travelers looking for a co-working space in downtown MKE to local creatives seeking a source of inspiration for their next project.

Discounted room rates are available: \$169 Deluxe King or Deluxe 2 Queens (based on availability). *insert hyperlink*

Address:
139 E. Kilbourn Ave.
Milwaukee, WI 53202



Milwaukee Athletic Club



The MAC has partnered with Saint Kate, The Pfister, and Drury Plaza hotels to offer discounted sleeping rooms for MAC members, guests of members, reciprocal clubs and staff.

Rates start at \$119.



Modern and Unique

Aloft Hotels

<https://aloft-hotels.marriott.com>



This boutique hotel has chic, modern and comfortable aesthetic and is all about location, location, location! Aloft is located right along the RiverWalk and is convenient distance to the bars, restaurants, and entertainment on Water Street, Old World Third Street, and the Deer District.

Address:
1230 Old World Third Street
Milwaukee, WI 53212





Burgers and Bloodies

Sobelman's Pub and Grill

<https://sobelmanspubandgrill.com>



If you are a burger snob, Sobelman's is the place to go. With over 20 different burger choices on the menu, you are bound to find your perfect choice. Located in the Industrial District, there is not much around this restaurant, but it is definitely worth the trip.

Pro-Tip: Do not forget to wash it down with one of their famous Bloody Marys. In fact, make your Bloody Mary your meal by ordering "The Masterpiece," which is a Bloody Mary topped with cheeseburger sliders.

Address:

1900 W. St Paul Ave.
Milwaukee, WI 53233

Authentic German Cuisine

Mader's

<https://madersrestaurant.com>



Mader's was founded in 1902 when a porterhouse steak was 20 cents, and a stein of beer was 3 cents. Best of all, if you drank two steins of beer, you earned a free lunch. Today, this legendary restaurant is located near the Deer District in Westtown. Today, your meal will cost you more than 20 cents, however, Mader's remains a must-see destination, celebrating MKE's German heritage.

“ **Pro-Tip:** Do not pass up this dining experience. Midwest Magazine called it **The best German restaurant in America** for a reason.

Address:

1041 N. Old World 3rd St.
Milwaukee, WI 53203



Fish Fry Friday

Lakefront Brewery

<https://lakefrontbrewery.com>

Since 1987, Lakefront Brewery has delivered on beer, and now they have expanded into a Wisconsin Friday tradition: Beer Battered Cod Fish Fry. Located along the river in the Beerline District, you can sit in the Beer Hall or venture onto the patio for your dining experience.

Pro-Tip: The Fish-Fry is offered daily, so you don't have to miss out.

Address:

1872 N. Commerce St.
Milwaukee, WI 53212

Brats on Brats on Brats

Milwaukee Brat House

<https://milwaukeebrathouse.com>

A celebration of MKE's German heritage, Milwaukee Brat House is an authentic MKE experience. Voted "Best Bratwurst" in the city, this Westtown establishment offers everything from classic a "Fully Loaded Brat" to a "Jalapeno Popper Mac N' Cheese Brat."

Pro-Tip: Check-out the Beer Garden that embraces the Old World Third charm and gives you a place to drink, eat, and enjoy live music.

Address:

1013 N. Old World 3rd St.
Milwaukee, WI 53203

An Elegant Experience

Bacchus

<https://www.bartolottas.com/bacchus>**BACCHUS**

A BARTOLOTTA RESTAURANT

Bacchus is part of the respected Bartolotta family restaurants. Known for exceptional food and an elevated dining experience, Bacchus is located near the heart of downtown and features a Three-Course Menu that highlights popular dishes served over the last 15 years for \$65 per person.

Pro-Tip: You will want to make a reservation.

Address:

925 E. Wells St.
Milwaukee, WI 53202

Brunch-Time

Toast

<https://toastmilwaukee.com>

All things breakfast and lunch, Toast has options for everyone. Located in Walker's Point District, the friendly and colorful dining environment combined with the fantastic food will leave you leaving 5-star Yelp reviews.

Pro-Tip: It is called "Toast" for a reason. Treat yourself to the decadent "Carmel Apple Pie French Toast."

Address:

231 S. 2nd St.
Milwaukee, WI 53204

Vegan Friendly

Celesta

<https://lakefrontbrewery.com>



“A Globally-minded vegan restaurant that serves otherworldly food.”

Tucked away on the East Side, Celesta serves plant-based cuisine packed with bold flavors. You cannot go wrong; everything is house-made and absolutely delicious.

Pro-Tip: If you need a caffeine fix, try the Rishi Chai. It is out of this world.

Address:

1978 N. Farwell Ave.
Milwaukee, WI 53215

Café on the Edge

Colectivo Coffee – Lakefront

<https://colectivocoffee.com/cafes/lakefront>



This unique café is located in the historic Milwaukee River Flushing Station, which was built in 1888. Colectivo serves sandwiches, soups, and salads, not to mention freshly brewed coffee, espresso, tea, and bakery items made from scratch every day.

Pro-Tip: Get there early, grab an Adirondack patio chair, and enjoy the beautiful lake view.

Address:

1701 N. Lincoln Memorial Dr.
Milwaukee, WI 53202

Catch-All

Milwaukee Public Market

<https://milwaukeepublicmarket.org>

This is a novel downtown food destination located in the Third Ward District. With high-quality selections of artisan products and freshly-prepared foods you are sure to enjoy shopping the independent vendors at the Milwaukee Public Market.

Pro-tip: Once you have decided on what to eat, head to the Market's beautiful second-floor Palm Garden to enjoy your meal.

Address:

400 N. Water St.
Milwaukee, WI 53202



An MKE Must

Drink Wisconsibly Pub
<https://www.drinkwi.pub>



“Everything great about Wisconsin concentrated in one place: a bar, naturally.

This pub offers a relaxed atmosphere with Wisconsin staples, like a Brandy Old Fashioned. Located in the Deer District and next to the Milwaukee Bucks arena (Fiserv Forum), Drink Wisconsibly is a great place to visit after a day of exploring the city.

Pro-Tip: Try their Bloody Mary with a side of their famous squeaky cheese curds for an authentic Wisconsin snack.

Address:
320 W. Highland Ave.
Milwaukee, WI 53203

Hole In the Wall

Wolski's Tavern
<https://www.wolskis.com>

WOLSKI'S
Milw. Wisc.

Established in 1908, Wolski's is an MKE legend. Inconspicuously located on the Lower East Side, this tavern is a great place to find good company and conversation while playing pool, throwing darts, and enjoying the covered patio.

Pro-tip: Staying out to close Wolski's is a Milwaukee coming-of-age experience. Plus, if you do make it to "last call," you will get a coveted "I Closed Wolski's" bumper sticker, not to mention some serious bragging rights.

Address:
1836 N. Pulaski St.
Milwaukee, WI 53202



Cocktail Lounge

The Outsider

<https://www.outsiderrooftop.com>



This is an elegant destination for a rooftop bar experience. The Outsider is located in the Historic Third Ward District and has an extravagant assortment of craft beverages while offering plush daybeds and a retractable trellis, along with fire pits and blankets. This cocktail lounge makes sure being outside is just as cozy and comfortable as being inside.

Pro-Tip: The Outsider is located on the top floor of the Kimpton Journeyman Hotel. Do not be afraid to walk in and take the elevator right up to the rooftop.

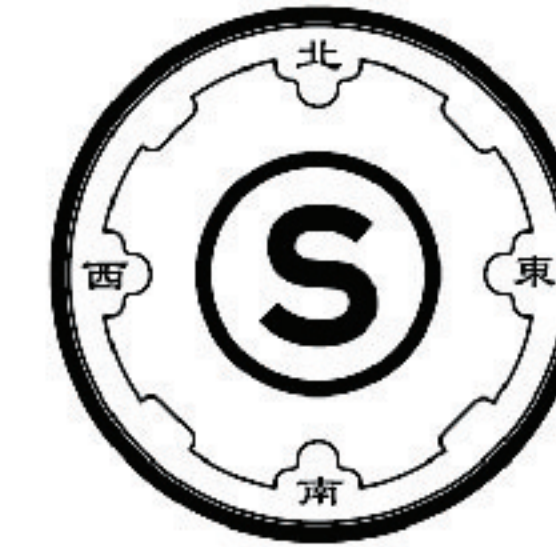
Address:

310 E. Chicago St.
Milwaukee, WI 53202

Speakeasy

Shanghai

<https://www.facebook.com/shanghaimke/>



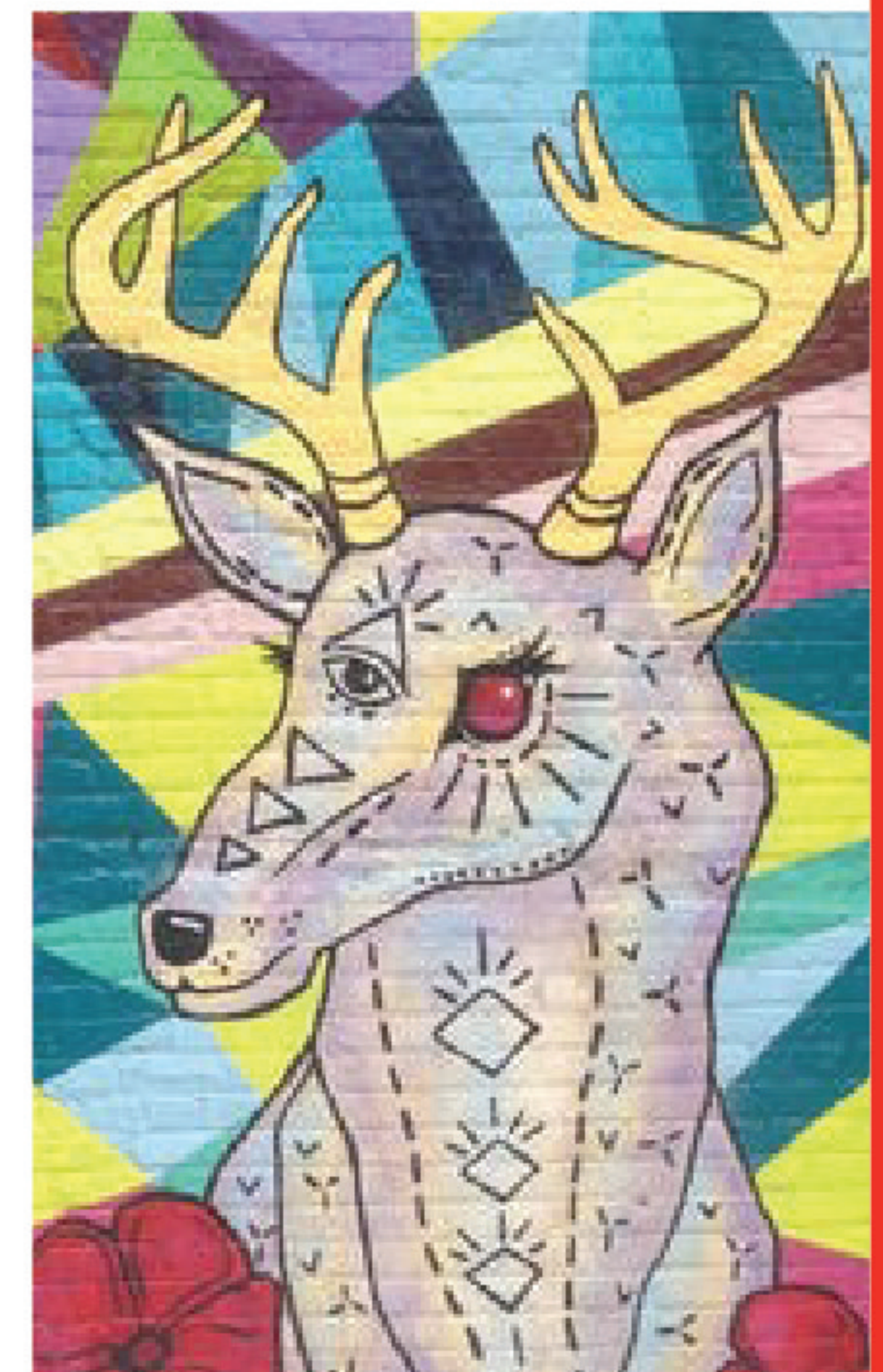
This establishment is an adventure to find and one of the East Side's best-kept secrets. This quaint hidden-gem is tucked away in a Black Cat Alley. On your way in, you will see whimsical art lining the buildings along the alley. Once you come across a chain-linked door stationed in front of an entrance with an "S" emblem hanging on it, you are in the right place. Use the access panel, press the button, and smile for the camera to unlock the gate.

Pro-tip: Speakeasies are all about secrets. Ask if they have a hidden menu.

Address:

2238 N. Farwell Ave.
Milwaukee, WI 53202

Enter Black Cat Alley next to Sip & Purr Cat Café



Cabin Turned Holiday Escape

Camp Bar

<https://www.campbarmke.com>



Inspired by the Northwoods, this destination offers a retreat from city life while enjoying some classic Wisconsin beverages. With two locations in downtown MKE, you cannot miss this cabin-themed neighborhood bar. In addition to being an escape from the hustle and bustle, Camp Bar is known for hosting decked-out holiday experiences, complete with themed drink menus.

Pro-Tip: If you are in town for Christmas, stop by their sister location, "Campsite 131," in the Historic Third Ward to participate in Santa Camp.

Addresses:

Deer Camp
1023 N. Old World Third St.
Milwaukee, WI 53203

Camp Bar Third Ward
525 E. Menomonee St.
Milwaukee, WI 53202



Brewery

Milwaukee Brewing Company

<http://mkebrewing.com/visit/mke-9th-st>

It is not a secret that Wisconsin is known for beer, and there are certainly plenty of breweries to choose from in MKE. Located just outside the Deer District, Milwaukee Brewing Company has been consistently voted the "best craft brewery" in the city.

Pro-tip: Pay a small fee and enjoy complementary pints while you take a taproom tour.

Address:

1128 N. 9th St.
Milwaukee, WI 53233



**MILWAUKEE
BREWING CO**

Wine

Balzac Wine Bar

www.balzacwinebar.com

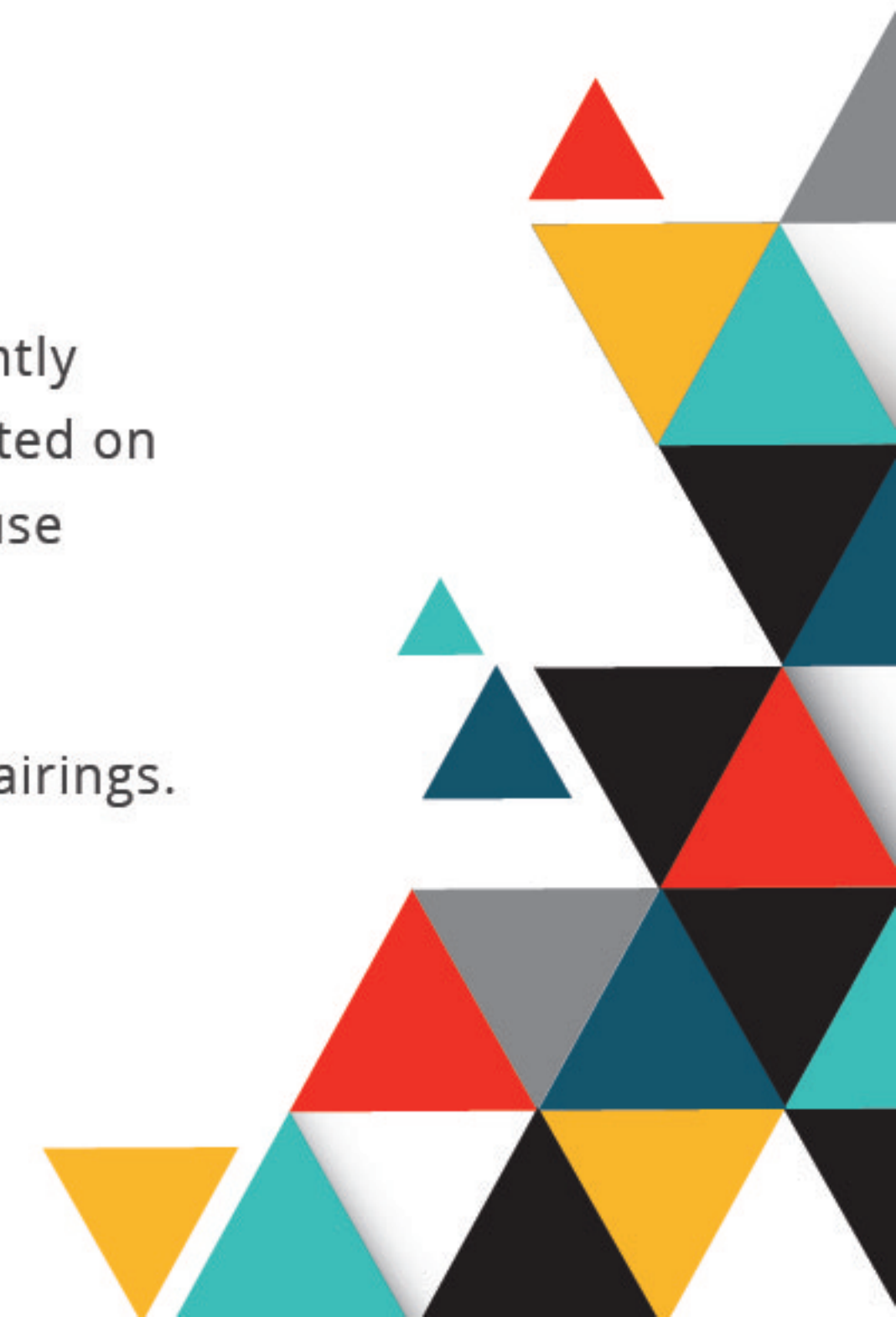


A quaint and classy establishment with a wine menu that is constantly changing but always features a full range of styles and prices. Located on the East Side, it is clear that Balzac knows how to treat wines because they are only served in stemless Riedel crystal.

Pro-tip: Try their tapas menu for excellent wine and snack pairings.

Address:

716 N. Arlington Pl.
Milwaukee, WI 53202





Parking Information: **THE HOP**
— STREETCAR —

MKE offers various parking options: free and time-limited street parking, meter parking, and parking garages. You will notice more free street parking around Water St. and some city-central university campuses, like Milwaukee School of Engineering.

Use this link to view your parking options: *insert hyperlink*

There are also several alternative transportation options in the city. In addition to Uber and Lyft as viable options, you can take MKE's streetcar, **The Hop** around town.



The Hop travels in continuous loops from the heart of the city down into the Third Ward District. *Visit: insert hyperlink*

Another option is paying \$0.25 per ride and renting a **Bublr Bike** *insert hyperlink*, which are stationed throughout MKE (you cannot miss them; they are bright blue).



And last but not least, there is tried-and-true **Public Transportation** *insert hyperlink* City buses run across MKE and into the suburbs.



Sun and Sand Make for Good Times

Bradford Beach

<http://www.bradfordbeachmke.com>



Bradford Beach is a favorite local destination. Part of Milwaukee County Parks, this beach is a piece of MKE's Lakefront. Equipped with volleyball nets, designated swim areas, and MooSa's Northpoint famous custard stand, this Bradford Beach has "good times" written all over it.

Pro-Tip: It is also a great place to stop during the winter season for a walk along the lakefront and a beautiful view of some Christmas lights.

Address:

2400 N. Lincoln Memorial Dr.
Milwaukee, WI 53211

Inspiration and Education

Milwaukee Art Museum

<https://mam.org>

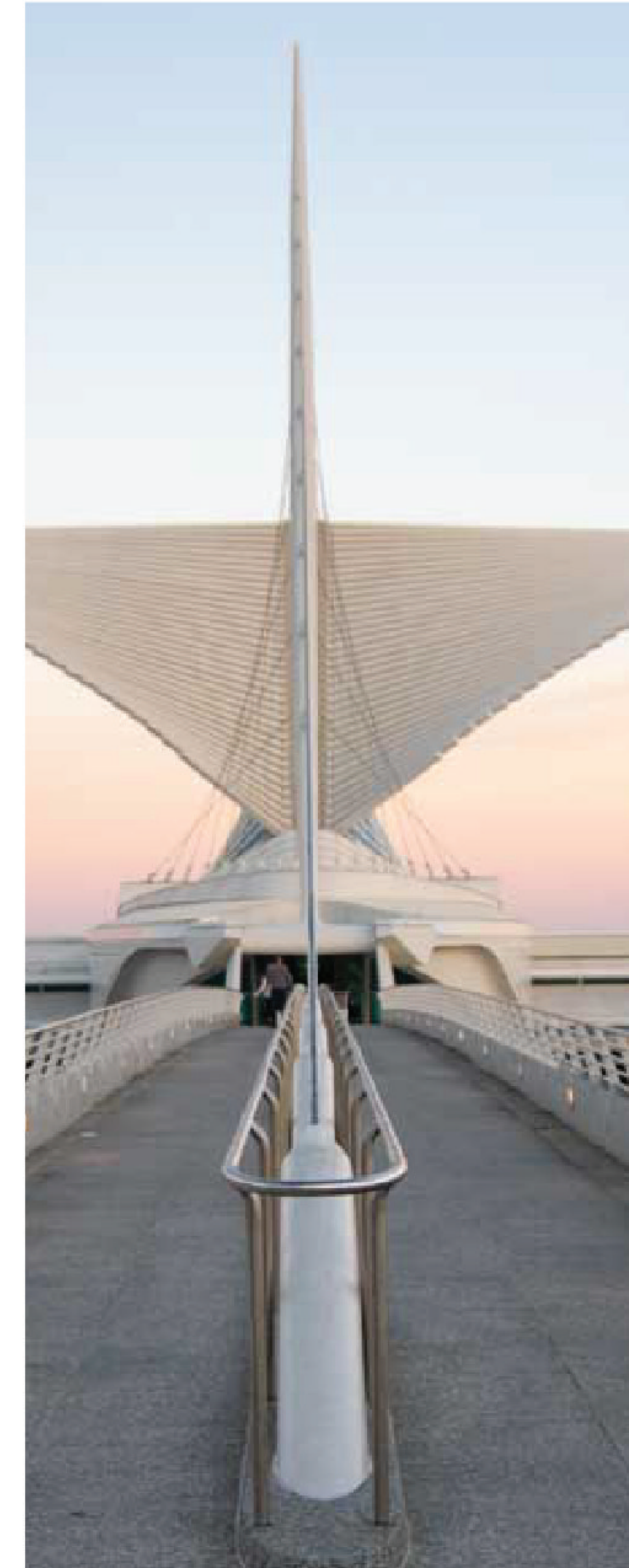
**MILWAUKEE
ART
MUSEUM**

What has become an iconic landmark in the MKE skyline, the Milwaukee Art Museum features the eye-catching Quadracci Pavilion. The museum has 4 floors of over 40 galleries of art rotated regularly with works from antiquity to the present in the far-reaching collection.

Pro-Tip: The exterior structure of the museum moves. See the "wings" open and close Friday–Sunday at 10 a.m., noon, and 5 p.m., as weather permits.

Address:

700 N. Art Museum Dr.
Milwaukee, WI 53202



Historic Third Ward

<https://www.visitmilwaukee.org/neighborhoods/historic-third-ward/>



Located along the lakefront, the land that the Historic Third Ward was eventually built on was originally a swamp. After the land was drained, Irish immigrants settled in the area and built factories and warehouses along the Milwaukee River. Disaster struck in 1892, when "The Great Third Ward Fire" broke out in the Water Street Union Oil & Paint Co. Strong and devastated the neighborhood. Reconstruction began immediately, and within 30 years, the Historic Third Ward was rebuilt into the important commerce district it once was.

Today the Historic Third Ward is a place of impressive architecture and home to over 500 businesses. In this district, you will find art galleries, boutiques, and award-winning restaurants. Not to mention, the incredible Milwaukee Public Market and infamous Henry Maier Festival Park are located in this booming urban district. It's also known as MKE's hotspot for artistic activity and is currently home to more than 20 galleries and art studios, the Milwaukee Institute of Art and Design (MIAD), and Broadway Theatre Center.



Looking for an Adrenaline Rush?

AXE MKE

<https://www.axemke.com>



If you like living on the edge, give axe throwing a try at this East Side bar. Walk-in or reserve a slot to throw on a lane. Are you wondering, is it safe to throw axes while drinking alcohol? No need to worry, you will have to sign a waiver when you arrive, and you are limited to 3 drinks while throwing.

Pro-Tip: Axe throwing is more challenging than you might think. Keep your shoulders square to the target.



Address:

1924 E. Kenilworth Pl.
Milwaukee, WI 53202

An Adrenaline Rush in History

Harley Davidson Museum

<https://www.harley-davidson.com/us/en/museum.html>



MUSEUM

Part of MKE's vibrant history, The Harley Davidson Museum offers behind-the-scenes tours, stories of history and heritage, and exclusive access to archives. If you are a motorcycle buff, this landmark in the Industrial District is just the place for you.

Pro-tip: Plan ahead. For health and safety measures the museum is only open on the weekends (Friday-Sunday) as of March 5th, 2021.

Address:

400 W. Canal St.
Milwaukee, WI 53201



Paddle Down the River

Milwaukee Kayak Company

<https://www.milwaukeekayak.com>

A fun paddling experience that lets you see MKE's distinct architecture. Milwaukee Kayak Company's main launch location is across from the Milwaukee Public Market. There are guided tours, as well as the option of daily rentals so you can explore at your own pace. Their educational kayak tours include trips with Milwaukee Riverkeeper, Menomonee Valley Partners, Harbor District Inc., and the Milwaukee County Historical Society.

Pro-Tip: It can be a little chilly on the water, so make sure you come prepared.

Address:

318 S. Water St.
Milwaukee, WI 53204



Explore The Great Outdoors

Grant Park

<https://www.visitmilwaukee.org/partners/grant-park-3048/>

Head 10 miles out of the city to South Milwaukee and explore the shores of Lake Michigan. This Milwaukee County Park is located near the airport and features sandy beaches, miles of wooded trails, sport courts, and a golf course.

Pro-tip: Bring your camera and some decent hiking shoes, and head to the Seven Bridges Trail for stunning scenery.

Address:

100 E. Hawthorne Ave.
South Milwaukee, WI 53172

A Scenic Stroll

Milwaukee RiverWalk

<https://city.milwaukee.gov/DCD/Projects/RiverWalk>

Walk through the heart of the city and take-in MKE's beautiful architecture from 3 district riverfront districts: the Historic Third Ward, Downtown, and Beerline. The 20-block stroll winds along the Milwaukee River and leads you to some of MKE's best restaurants, brewpubs, shops, and nightlife.

Pro-Tip: Head just south of Wells St. and snap a selfie with a favorite local piece of art: The Bronze Fonz. American artist Gerald P. Sawyer created this statue in 2008 to pay homage to Arthur Fonzarelli, AKA "Fonzie," from the popular sitcom "Happy Days," set in 1950s Milwaukee.

Address:

Downtown MKE



A Family History of Beer... and So Much More

Pabst Mansion

<https://www.pabstmansion.com>

Located in Avenues West District, The Pabst Mansion is an award-winning historic museum and architectural landmark. Built in 1892 as a residence for the Pabst family (founders of Pabst Brewing Company), this mansion was filled with priceless treasures. You can tour the estate, which has a rich and interesting history as it survived into the 21st century.

Pro-Tip: Take the 2-hour behind-the-scenes tour (offered only certain times of the year) and discover what is behind the ropes and closed doors.

Address:

2000 W. Wisconsin Ave.
Milwaukee, WI 53233



Dinner With a Side of Adventure

SafeHouse

<https://www.safe-house.com>

SAFEHOUSE[®]

Have you always dreamed of being a spy? If so, this iconic MKE establishment is the destination for you. Opened in 1966, this family-friendly bar and restaurant invites you to embrace your inner secret agent and explore this hideout while enjoying some delicious food and beverages.

Pro-tip: Those who know the secret password are allowed immediate access. If you do not know the password, you might be asked to complete a clearance test. Check-out their Facebook page for a password hint.

Address:

779 N. Front St.
Milwaukee, WI 53202

Nerd Out

Discovery World Science + Technology Center

<https://www.discoveryworld.org>



Discovery World is MKE's premier, non-profit science and technology center located on the lakefront. Embrace the Big Kid in you and play with hands-on exhibits and programs that focus on two industries: technology and freshwater sciences.

Pro-tip: Do not forget to check-out the aquarium and pet a stingray before moving onto your next MKE adventure.

Address:

500 N. Harbor Dr.
Milwaukee, WI 53202



Live Entertainment

Fiserv Forum

<https://www.fiservforum.com>



Known for being the home court to the Milwaukee Bucks basketball team, the Fiserv Forum is a unique landmark near the heart of the city. Recently constructed, Fiserv Forum was built to redefine the fan experience and highlight the feeling of community when attending live entertainment.

Pro-Tip: Fiserv Forum is located in the Deer District. You can find great dining options in the plaza, just outside the arena.

Address:

1111 Vel R. Phillips Ave.
Milwaukee, WI 53203

Play Ball! ...or Watch The Professionals Play!

American Family Field

<https://www.mlb.com/brewers/ballpark>



Head a couple of miles West of the city, and you will find yourself Infront of American Family Field. Home to the Milwaukee Brewers, this stadium hosts baseball games, as well as concerts, weddings, and even graduation ceremonies.

Pro-Tip: If you decide to attend a baseball game, befriend some locals for an authentic Wisconsin tailgate experience in the stadium's parking lot.

Address:

One Brewers Way
Milwaukee, WI 53214

A Memorable Way To Explore the City

Discover Iconic Milwaukee Tour

<https://www.citytourismke.com/ctmke/discover-iconic-mke-tour/>



MKE has a lot more to offer than just beer. This 90-minute adventure lets you take-in the city when you jump on an electric 5 passenger Cruiser and get a local's view of MKE.

Pro-tip: There is a variety of tour options to pique your interest. From a Haunted History Tour to Cruisin' Karaoke and Christmas Lights Tours, there is something for everyone.

Address:

1659 N. Jackson St.
Milwaukee, WI 53202

The World's Largest Music Festival

Summerfest

<https://www.summerfest.com>



The Summerfest tradition goes back to 1968, bringing the MKE community members together through live music. The festival has dramatically expanded into an annual two-week event and has brought many music legends to the city: The Rolling Stones, Paul McCartney, The Beach Boys, Prince, Bruno Mars, Lady Gaga, Whitney Houston, and Tom Petty.

Pro-tip: Plan accordingly. The 2021 festival will be held during September. Visit the website for further details.

Address:

Summerfest Grounds
200 N. Harbor Dr.
Milwaukee, WI 53202

